

LEVINE CANCER NAVIGATOR

LEVINECANCERINSTITUTE.ORG

VOLUME 2 | ISSUE 4

ANNOUNCEMENT: CLINICAL PATHWAYS ESTABLISHED PAGE 3

Levine Cancer Institute is changing the course of cancer care by removing the barriers that separate patients from world-class research and treatment.

SIGN UP TO RECEIVE LEVINE CANCER NAVIGATOR

If you're interested in receiving a copy of *Levine Cancer Navigator* via email or mail, visit

levinecancerinstitute.org/physician and fill out the short sign-up form.

Privacy policy: Your information will not be used for third-party distribution.

INSIDE ...



Research/Clinical Trials:
Establishing Clinical Pathway
Treatment Guidelines for Tumors
PAGE 3



Institute Update:
Focus on Cancer Survivorship
PAGE 4



Institute Spotlight:
CMC-Union's Edwards Cancer
Center
PAGE 6



Levine Cancer Institute



New Research and Administrative Center Opens

CAROLINAS HEALTHCARE SYSTEM'S (CHS'S) LEVINE CANCER INSTITUTE

opened its research and administrative headquarters on the campus of CHS's Carolinas Medical Center in Charlotte, N.C. By integrating and building upon CHS's network of elite cancer programs and centers, the Institute is able to provide its more than 11,000 new cancer patients annually with greater access to specialists, treatments, clinical trials and support services closer to where they live.

While the Institute functions as a series of integrated cancer programs distributing high-quality cancer care systemwide, the building serves as a center for communication, research and administration. It houses the technology infrastructure to more seamlessly

connect physicians and care teams and share best practices and programs.

ADVANCING COORDINATED PATIENT CARE

"The opening of the building is symbolic of the entire Levine Cancer Institute network being fully functioning, for the advancement of patient care across the Carolinas," says Institute President Derek Raghavan, MD, PhD. "The new resources and technology in this space enable us to be better connected to our partner institutions across the Carolinas, sharing knowledge, standard protocols and research, while offering our patients here in Charlotte a state-of-the-art place to receive their cancer care."

Continued on page 2



Levine Cancer Institute's lobby offers patients and visitors a serene and welcoming environment.

New Center Opens
Continued from page 1

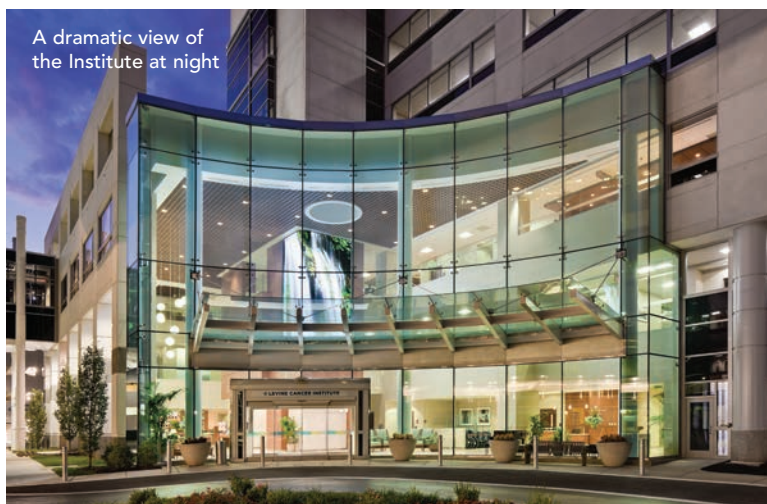
The development of the Institute and the building was made possible by a generous \$20 million leadership gift from the Leon Levine Foundation. The building, of which CHS began construction in March 2011, features:

- ▶ five new stories (for a total of six stories) with more than 171,000 square feet of space
- ▶ nine cancer clinics, infusion therapy, palliative care and clinical trials
- ▶ Blumenthal Infusion Center with more than 80 infusion chairs
- ▶ teleconference space and capabilities for virtual support and case management
- ▶ Phase 1 clinical trials unit and the conduct of multicenter tumor boards and conferences throughout the Carolinas to support the administration of novel therapies in the earliest stages of development.

Although Phase 1 investigation is already being conducted, to a limited extent, within the system, the development of this specialized unit will bring advances in the study and



The Institute's new six-story center is located on the campus of Carolinas Medical Center in Charlotte, N.C.



A dramatic view of the Institute at night

treatment of cancer therapeutics to patients more quickly.

"We're extremely grateful to the Levines and other benefactors, CHS, our staff and physicians and communities across the Carolinas for helping make a reality of our vision to bring world-class cancer care closer to home for patients," says Dr. Raghavan.

To support patients and their families in their survivorship journeys, the building also includes a rooftop healing garden, gift shop, patient image boutique, patient and family resource center (offered in partnership with the American Cancer Society) and class and consult rooms for art therapy, nutrition and wellness, support groups and counseling.

TOP-RANKED EXPERTS

"By leveraging cancer expertise and resources from across our system, we are creating a first-of-its-kind decentralized approach to cancer care, which removes the barriers that separate patients from access to breakthrough research and treatments," says Edward S. Kim, MD, chair of the Department of Solid Tumor Oncology and Investigational Therapeutics. Dr. Kim was recently recruited to the Institute from the University of Texas MD Anderson Cancer Center. "I am thrilled about the opportunity to implement more novel clinical research trials throughout the system to benefit the people in the Carolinas."

Continued on page 8

Images on any of these pages may be from one or more of these sources: © 2013 Thinkstock and © 2013 iStockphoto.com.

Establishing Clinical Pathway Treatment Guidelines for Tumors

"TO THINK LIKE A SYSTEM, NOT LIKE A BUILDING."

That's the end goal that Edward S. Kim, MD, chair of Solid Tumor Oncology and Investigational Therapeutics, sees as he describes the recent creation of tumor clinical pathway treatment guidelines within Carolinas HealthCare System's Levine Cancer Institute.

Since coming from the University of Texas MD Anderson Cancer Center to the Institute in July 2012, Dr. Kim has been instrumental in helping Institute physicians draft these guidelines. The guidelines cover 15 different tumor sites and are aimed at ensuring treatment is consistent for all Institute patients, no matter the facility in which they're being treated. It's a unique, unified model that takes comprehensive care and leading-edge research and brings it directly to the patient.

"We don't want the perception that medicine is better in one place over another," Dr. Kim says of patients having to travel great distances to be treated. "The Institute has a lot of expertise spread throughout the system, and we want to make sure that all physicians are treating patients with the same level of care using one of several care plans."

These guidelines follow best practices and are a conglomeration

of national guidelines, society guidelines and current clinical practice, he says.

A GATHERING OF EXPERTISE, A TEAM APPROACH

Behind the scenes, great pains have been taken to make sure the guidelines are effectively being used across all the Institute's charter member facilities. Each week, a multidisciplinary team of oncologists and other cancer care experts, or "tumor boards," meet to discuss patient cases. On a monthly basis, "tumor sections" convene and focus on specific cancers, including lung, breast, genital/urinary, gastrointestinal, neuro/brain and melanoma/immunotherapy. (A sarcoma and head/neck cancer section is in the works, according to Dr. Kim.) Guidelines are discussed, including the need for any changes, as well as current research, research protocols

and potential clinical trials. Any provider, no matter his or her specialty, can participate in these meetings.

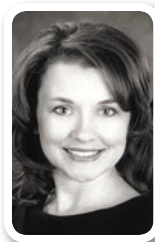
A major component of the guidelines moving forward will be giving patients greater access to the latest clinical trials, which, according to Dr. Kim, will help the Institute create its own identity as a leader in research excellence, both here in the Carolinas and nationally. He foresees multiple Institute sites conducting clinical research, as well as physicians writing their own studies and conducting them at a host of sites within the system. "To have your own study and then to run it in 12 to 15 places at the same time—that's unheard of," Dr. Kim says. "But we're going to put these trials in your backyard. Improving our patients' care is the top priority, and the quicker we get answers from these clinical trials, the faster we can help our patients." ✨



Edward S. Kim, MD
Chair, Solid Tumor Oncology and Investigational Therapeutics, Levine Cancer Institute



Focus on Cancer Survivorship



Beth York, MA, LPC
Director,
Survivorship & Integrative
Oncology,
Levine Cancer
Institute in
Charlotte

IN 2011, THE CENTERS FOR DISEASE CONTROL AND

Prevention (CDC) released a report stating that the number of cancer survivors increased from 3 million in 1971 to 9.8 million in 2001. Because cancers are detected earlier and treatment methods have become much more sophisticated, providers are treating patients who are living longer with cancer than ever before. Levine Cancer Institute's new facility was designed with survivorship in mind and services for survivors—a term, according to the CDC, referring to “individuals who have been diagnosed with cancer, from the time of diagnosis throughout their lives”—are woven throughout the building.

A POSITIVE PATIENT EXPERIENCE

“The building’s design is representative of the degree of thought that’s gone into our survivorship program and integrating it into the care as part of the patient experience,” says Beth York, MA, LPC, director of Survivorship & Integrative Oncology at the Institute. “It’s not some separate destination somewhere down the road; it is part

of the medical care that’s going to be delivered to the patients here.”

The Institute has a generous offering of survivorship programs, such as fertility preservation, nutrition and wellness and support, but the new facility allows for better coordination of these treatments by bringing them under one roof and using patient navigators and their cancer resource center, a venture with the American Cancer Society (ACS), operated by trained volunteers who can access the ACS database to provide patients the information and educational materials that they need.

TREATING BODY, MIND AND SPIRIT

The Institute is also developing an integrative oncology program, providing patients with information about complementary medicine and connecting them to the activities and programs they choose to participate in. A grant from the LIVESTRONG Foundation has enabled “artists in residence”

to provide writing and art classes.

Many hospitals have gift shops that provide cards, flowers and other accouterments for patients’ families, and some items for patients themselves, but the new building goes a step further, offering a patient image boutique that is aimed at enhancing the patients’ quality of life. Wigs, mastectomy-related supplies, aromatherapy, nutritional supplements and moisture-wicking sleepwear are all available at the boutique; and because, as York notes, the Institute needs to “extend beyond itself,” an online capacity for the boutique is being developed.

“This is an exciting program, and it will allow us to venture into an area that’s not always part of a cancer center agenda,” says Levine

Cancer Institute President Derek Raghavan, MD, PhD.

“However, it’s important to understand that we will not only be accepting folklore,

but will test hypotheses about integrative approaches using the technology of clinical trials,” Dr. Raghavan explains. ✨



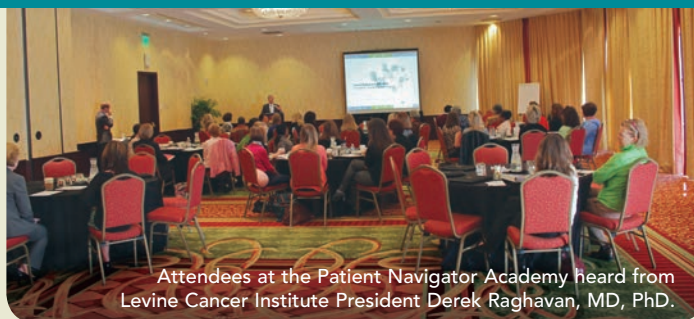
"THIS IS AN EXCITING PROGRAM, AND IT WILL ALLOW US TO VENTURE INTO AN AREA THAT'S NOT ALWAYS PART OF A CANCER CENTER AGENDA."

CMC-University Earns Gold

► Carolinas Medical Center-University has earned the nationally recognized Gold Seal of Approval™ and Disease-Specific Care Certification in Prostate Cancer from The Joint Commission.

The Joint Commission awarded the hospital certification after performing an extensive on-site review and making sure the hospital demonstrated compliance with nationally developed standards for prostate cancer care. The program will be re-evaluated once every two years.

"It took a lot of hard work by every member of our team and a continued commitment to a care delivery model resulting from evidence-based practice," says board-certified urologist Roberto Ferraro, MD. "This certification provides us a framework to take our prostate cancer program to the next level and creates a culture of excellence at CMC-University.



Attendees at the Patient Navigator Academy heard from Levine Cancer Institute President Derek Raghavan, MD, PhD.

Patient Navigator Academy a Success

► In September 2012, Levine Cancer Institute held its second annual Patient Navigator Academy, highlighting excellence in patient care.

Bladder Cancer Update

► Derek Raghavan, MD, PhD, president of Levine Cancer Institute, was honored to contribute as Guest Editor in the periodical, *Seminars in Oncology*, Vol. 39, No. 5, Oct. 2012.

Dr. Raghavan wrote the introduction and was a contributing researcher, with Earle Burgess, MD, Kris Gaston, MD, Michael Haake, MD, and Steve Riggs, MD, from the Institute, for the article "Neoadjuvant and Adjuvant Chemotherapy Approaches for Invasive Bladder Cancer." He collaborated on another article, "Small Cell Bladder Cancer: Biology and Management," with researchers from the University of Southern California and the University of Miami.

Integrative Oncology Symposium: Feb. 8

► Patients shouldn't have to take risks to participate more fully in their cancer treatment. Integrative Oncology helps fill the void.

A diagnosis of cancer affects people physically, emotionally and spiritually during treatment and beyond. Thus, an individualized approach that focuses on all aspects of a person's life is required to optimize their health and healing. Integrative Oncology promotes the adoption of a healthy diet and lifestyle habits, as well as the use of select complementary therapies, as adjuncts to exceptional conventional medical care to help reduce symptoms of cancer and its treatment, enhance quality of life and hasten healing.

Consider this: An estimated 30 to 80 percent of cancer patients use some

form of alternative medicine during treatment, often without their caregivers' knowledge. This can prove dangerous, yet do you know what to tell a patient who asks about vitamins and supplements or acupuncture, or massage therapy? Few conventional medical providers do.

Levine Cancer Institute is out to change this situation.

On Friday, Feb. 8, we will hold our inaugural Integrative Oncology Symposium at the Renaissance Charlotte SouthPark Hotel. Speakers will address the theories behind and the practice of complementary therapies, review research on safety and efficacy and offer recommendations about therapies that can relieve symptoms cancer

patients commonly face, including fatigue, insomnia and peripheral neuropathy.

Patients and their family members are invited to meet in a relaxed setting, and you can learn how to guide patients in the proper use of complementary therapies. You might even leave a little healthier yourself.

For more information, call Tamara Tillman at **704-512-6534**. If you are a healthcare professional and would like to receive 6.75 AMA PRA Category 1 Credits™ or .68 CEUs through attendance, please register through the Charlotte AHEC website at charlotteahec.org.





Cancer survivor Jenny Biggers (right) meets with clinical trials research nurse Sandy Pollock, RN.

Carolinas Medical Center-Union Offers Clinical Trials

Partnership with Levine Cancer Institute Results in Positive Outcomes



EDWARDS CANCER CENTER AT CAROLINAS MEDICAL

Center-Union and Levine Cancer Institute are working together to offer Union County patients access to national and international clinical trials.

EXPERT CARE

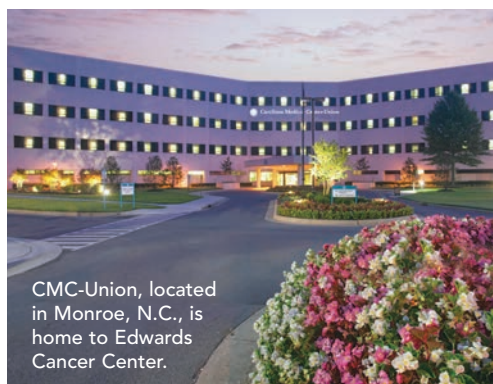
Patients at Edwards Cancer Center are participating in breast, lung and colon cancer trials, allowing researchers to test new drugs or combinations of drugs and new approaches to surgery, chemotherapy and radiation therapy. (See “Bringing World-Class Cancer Care Closer to Home” to read one patient’s story.)

According to Gregory Brouse, MD, medical director of Edwards Cancer Center at CMC-Union and a senior faculty member of the Institute team, patients respond quite favorably when presented with trial opportunities. “Before our partnership with the

Institute, a patient participating in a trial would have to be transferred to Charlotte,” he explains. “With us being able to offer the trial locally, patients can get all of their therapy, testing and laboratory studies right here in Monroe.”

EXPANDING OPTIONS FOR PATIENTS

Dr. Brouse anticipates Edwards Cancer Center adding new trials as the program develops and as the Institute continues to grow. He believes the advances made and the insights gained from participation in clinical trials will have far-reaching effects. “We’re helping to advance



CMC-Union, located in Monroe, N.C., is home to Edwards Cancer Center.

how cancer patients will be treated three to five years down the road. This is good for the patients, the cancer center and the whole cancer community.”

The Institute integrates and builds upon cancer programs within CHS’s network of affiliated hospitals and providers to deliver innovative protocols when they’re needed most—so where a patient lives will not determine how he or she fights cancer. ✨

COMPREHENSIVE CARE

For more information about the clinical trials program at Edwards Cancer Center, call **704-225-2418**.



BRINGING WORLD-CLASS CANCER CARE CLOSER TO HOME

Edwards Cancer Center patient Jenny Biggers faced a 24-month survival as a result of being diagnosed with colon cancer that metastasized to her liver—surgery wasn’t an option. Standard therapies would buy her some time, but not nearly enough for the 59-year-old wife, mother and grandmother.

Sandy Pollock, RN, a clinical trials research nurse at Carolinas Medical Center-Union reviewed Biggers’ case and deemed her eligible to participate in a trial that could potentially improve her chances for survival. Pollock, along with Gregory Brouse, MD, medical director of Edwards Cancer Center at CMC-Union, approached Biggers about participating in the clinical trial and she agreed.

Thus far, Biggers’ response to treatment has been very favorable. She underwent radioembolization, a procedure used to deliver radiation directly to the cancerous areas in her liver, followed by chemotherapy. Colon cancer patients typically undergo radioembolization later in treatment, but in this trial, researchers are evaluating whether offering the procedure earlier in the course of treatment will affect outcomes. “Mrs. Biggers has continued regression in all of the measurable spots in her liver—it’s pretty dramatic,” explains Dr. Brouse. “She’s put herself into a category where, unless things go unpredictably wrong, she will pull up the average as far as survival.” Biggers is happy she didn’t need to travel far for advanced treatment. “We’re definitely going to beat this thing,” she says.

Cancer Center at Grace Hospital Earns Accreditation



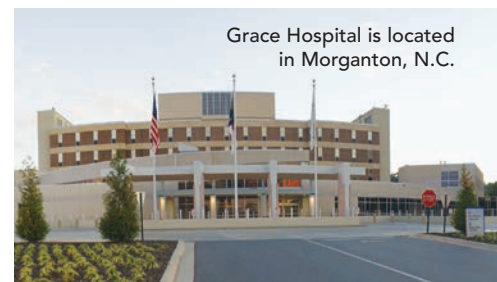
BLUE RIDGE HEALTHCARE'S CANCER CARE CENTER AT

Grace Hospital received a three-year accreditation with commendation from the American College of Surgeons Commission on Cancer. Only 25 percent of all cancer treatment programs in the United States receive this designation.

Board-certified oncology physicians and certified oncology nurses with the Medical Oncology Department treat adult patients

with any diagnosis of cancer/ blood dyscrasias and perform ambulatory infusions for non-chemotherapy patients.

The outpatient clinic provides chemotherapy for the treatment of all hematologic malignancies such as lymphomas and leukemia. Chemotherapy is also provided for common malignancies that respond to this treatment, including breast cancer, colon cancer, lung cancer and gynecologic cancers, as well as



Grace Hospital is located in Morganton, N.C.

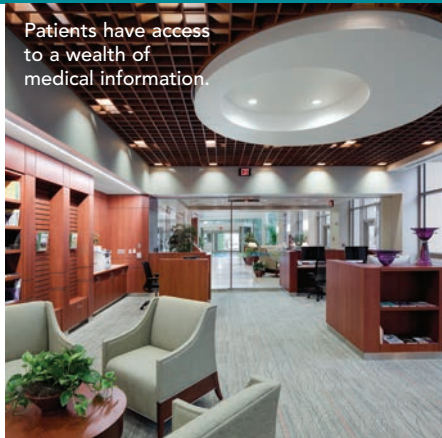
less common tumors. In addition, the department administers monoclonal antibodies and performs infusion therapy for patients requiring antibiotics, blood or iron transfusions. For more information, visit wherehopegrows.org. ✨



Printed With Soy Ink
 Please Recycle This Publication

Copyright © 2013 Levine Cancer Institute

CHANGING THE COURSE OF CANCER CARE



Patients have access to a wealth of medical information.

New Center Opens Continued from page 2

To date, the Institute has recruited cancer leaders from top-ranked programs across the country. It united more than 30 oncologists already employed throughout CHS, hired two pharmacologists and a biostatistician to expand its basic science capabilities and employed support staff, including registrars, social workers, nurses, nurse navigators, survivorship experts and a financial counselor. These experts are developing standard treatment protocols to accelerate efficient, effective therapy and improve patients' access to clinical research. The Institute also developed robust patient survivorship support programs like patient navigation, integrative medicine and fertility preservation and is piloting programs to reduce disparities and

provide improved access to care.

Edward Copelan, MD, FACP, says, "It was this exciting venture, building a 'cancer institute without walls' and developing standard best practices to benefit patient care across the Carolinas, that attracted me to Levine Cancer Institute." Dr. Copelan began as chair of the Department of Hematologic Oncology and Blood Disorders in September 2012 from a leadership role at the Cleveland Clinic's Taussig Cancer Institute.

A SOLID CARE NETWORK

Last fall, the Institute announced its charter member institutions, the first group of CHS-affiliated hospitals as part of the system's new cancer care network. Members work across the network, focusing on initiatives like quality of care, technology, clinical trials, data sharing and review, patient navigation, health disparities and community outreach. The charter member institutions are:

- ▶ AnMed Health – Anderson, S.C.
- ▶ Batte Cancer Center at Carolinas Medical Center (CMC)-NorthEast – Concord, N.C.
- ▶ Blue Ridge HealthCare – Grace and Valdese Hospitals – Morganton and Valdese, N.C.

- ▶ Carolinas Medical Center (the Institute's research and administrative headquarters) – Charlotte, N.C.
- ▶ Cleveland Regional Medical Center – Shelby, N.C.
- ▶ CMC-Lincoln – Lincolnton, N.C.
- ▶ CMC-Mercy – Charlotte, N.C.
- ▶ CMC-Pineville – Charlotte, N.C.
- ▶ CMC-University – Charlotte, N.C.
- ▶ Edwards Cancer Center at CMC-Union – Monroe, N.C.
- ▶ Roper St. Francis Healthcare – Roper, Bon Secours St. Francis and Roper St. Francis Mt. Pleasant Hospitals – Charleston, S.C.
- ▶ Stanly Regional Medical Center – Albemarle, N.C. ✨

YOUR PARTNER IN CANCER CARE

The Institute's administrative and research headquarters is located at 1021 Morehead Medical Drive, Charlotte, N.C. For more information and to take a virtual tour of the facility, visit

levinecancerinstitute.org.